

# ALIGN BY DESIGN

---

Creating Environments that Propel Growth





SPACES EITHER FUEL OR  
DRAIN OUR ENERGY



# EXTERNAL

ENVIRONMENTS ALIGNED  
WITH OUR INTENTIONS

---

# INTERNAL

FEEDING OUR SOULS WITH  
WHAT MATTERS

---



The background is a dark, atmospheric landscape. In the foreground, there is a dirt path leading through tall, dry grass. The path leads towards a series of rolling hills in the distance. The sky is dark and cloudy, with a hint of light on the horizon. A white rectangular box is centered in the middle of the image, containing the text "DISCONNECTION IS THE ENEMY" in a dark blue, serif font. There are two small white horizontal bars, one in the top left corner and one in the bottom right corner.

DISCONNECTION IS THE ENEMY



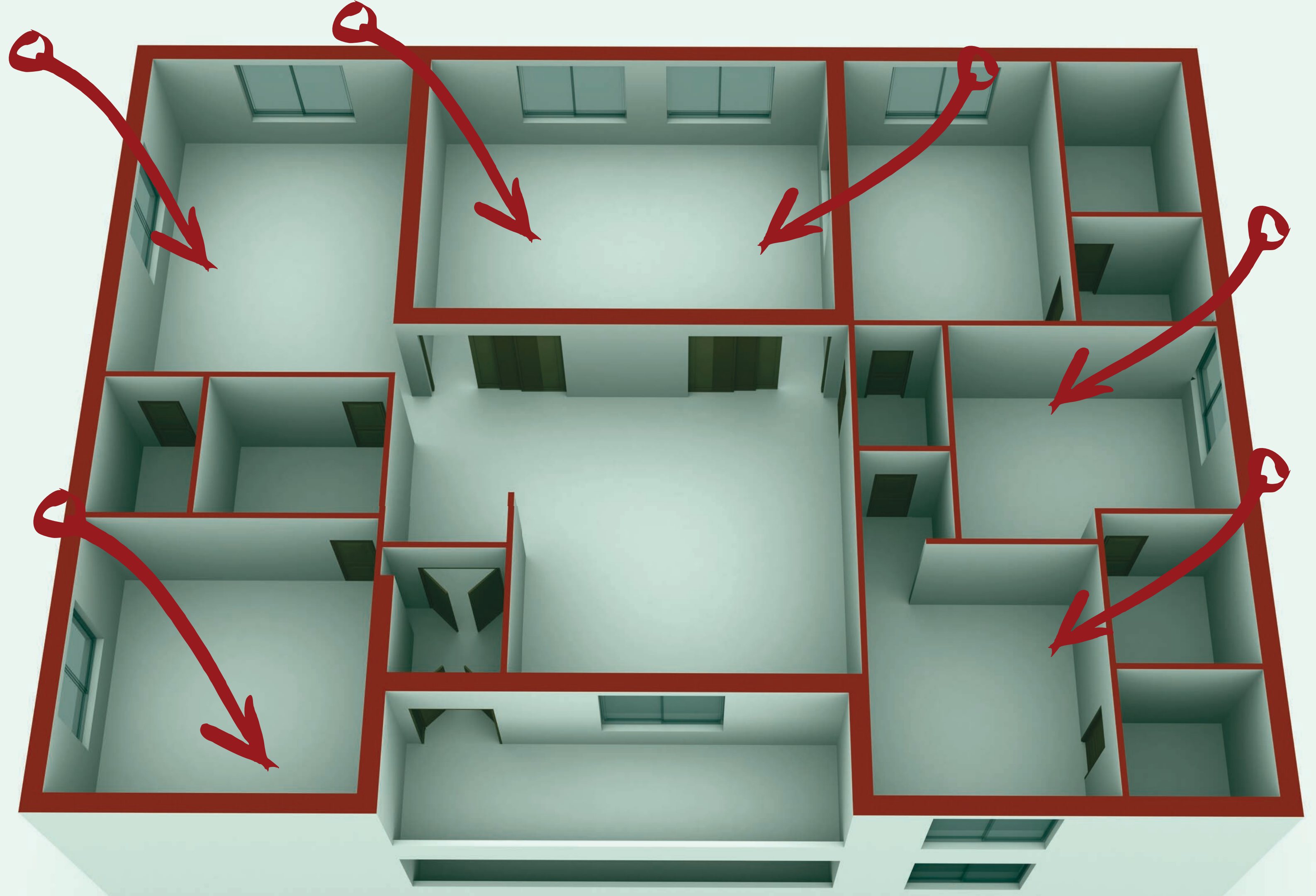
# Position

## **EXTERNAL**

Solid Support  
Room to Think  
Spirit Triggers

## **INTERNAL**

Motivations  
Movement  
Momentum













# Position

## **EXTERNAL**

Solid Support  
Room to Think  
Spirit Triggers

## **INTERNAL**

Motivations  
Movement  
Momentum



A photograph of a forest with a dirt path leading into the distance. The trees are tall and thin, with green foliage. A semi-transparent white rectangular box is centered over the image, containing the text "LIFE FLOWS WHEN YOU TAP INTO GREATER SOURCES" in a dark blue, sans-serif font. There are two small white rectangular marks: one in the top-left corner and one in the bottom-right corner of the image.

LIFE FLOWS WHEN YOU TAP  
INTO GREATER SOURCES



---

EXTERNAL

Energy of color  
Seasonal Living

INTERNAL

Shades of Light  
Strokes of Genius  
Make some Tracks

**Paint**















COLOR	MEANING
Red	Often used to represent strength, power, passion, and determination
Orange	Associated with joy, enthusiasm, creativity, and success
Yellow	Associated with happiness, energy, freshness, and intellect
Green	Used to represent growth, ambition, and harmony
Blue	Associated with stability, wisdom, loyalty, and confidence
Purple	Associated with power, ambition, wisdom, and dignity, as well as creativity
White	Represents new beginnings, innocence, and simplicity
Black	Associated with elegance, power mystery, strength, and mystery





# Seasonal Living

Connect with nature and let the tress,  
birds, and river show you the way.





EXTERNAL

Energy of color  
Seasonal Living

INTERNAL

Shades of Light  
Strokes of Genius  
Make some Tracks

# Paint





## Align by Design

"Renew and remodel with each changing season,  
for the art of excavation is where we discover our true nature."

~ Mina Fies

	EXTERNAL	INTERNAL
POSITION		
PAINT		
PLANT		



A tall, pointed rock formation stands prominently in the center of the frame, rising from the ocean. The sky is filled with soft, wispy clouds in shades of blue and purple, suggesting a sunset or sunrise. The water is a deep blue with gentle ripples. In the foreground, a smaller, darker rock formation is partially submerged. The overall mood is serene and majestic.

YOU ARE THE POWERSTATION  
AND THE CONDUIT



# Plant

## **EXTERNAL**

Symbols of Growth

Great Teachers

Intention Matters

## **INTERNAL**

Tending our Soil

Size of Garden

Surrounding Species



A woman with long brown hair is sitting on a dark-colored sofa in a living room. She is wearing a white long-sleeved shirt and blue jeans. She is looking down at a small object in her hands. The room has a stone fireplace on the left with several framed photographs on the mantel. A large window with white curtains is in the background. A semi-transparent white rectangular box is overlaid on the center of the image, containing the text "COME HOME TO YOURSELF" in a dark blue, sans-serif font.

COME HOME TO YOURSELF



A yellow robotic arm is shown in a factory setting, positioned over a metal structure. The background is slightly blurred, showing industrial equipment. The text 'JOIN THE JOURNEY...' is overlaid in a dark blue, sans-serif font.

JOIN THE JOURNEY...

MINAFIES.com